

TREEHOUSE

sitting four



TREEHOUSE

sitting four

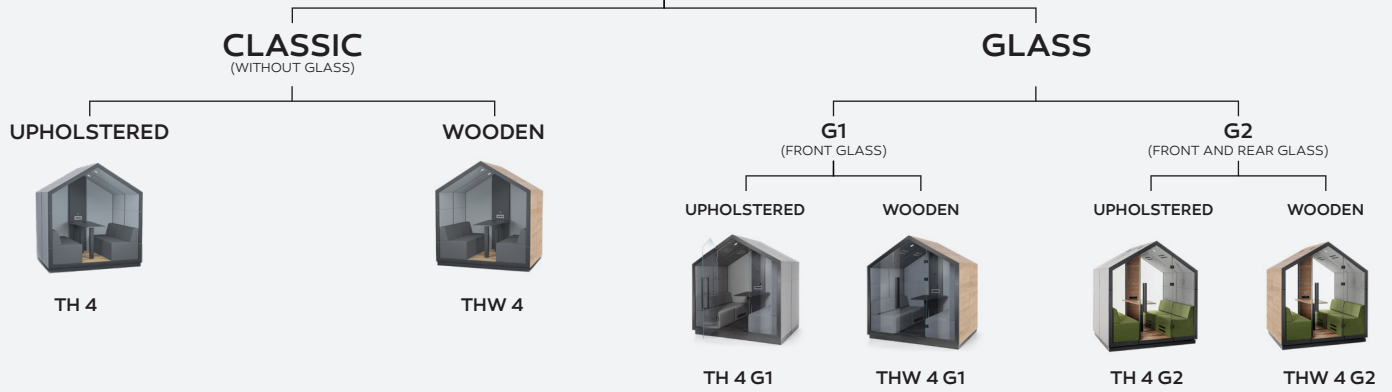
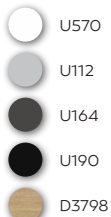


Table top

- Laminated board



- HPL



- Wooden



Wooden or sound absorbing upholstered panels

- Wooden

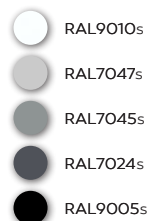


- 15 types of fabrics in a wide range of colours

Sound absorbing upholstered panels

15 types of fabrics in the wide colour range

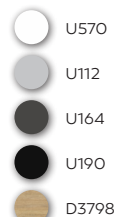
Metal frame, door handle and table leg powder painted (structure)



Multimedia panel

Frame enabling an assembly of a holder for 32-inch TV set

- Laminated board



- HPL



- Fabric upholstered inner or outer panels

Floor

- Wooden



Acoustic glass

safety according to ČSN EN 12600 standard



LIGHTING 



TWO-STAGE LIGHT
REGULATOR 



MEDIA PORT AND
POWER SUPPLY 230V   



SMOOTH LIGHT INTENSITY
AND VENTILATION
REGULATION 



VENTILATION 



VENTILATION 

CLASSIC applies to TH CLASSIC (version without glass)

GLASS applies to TH GLASS (version with glass)

CONSTRUCTION

Durable steel frame and carefully selected materials with the high **sound insulation and soundproofing** properties.

LIGHTING

Efficient, **energy-saving LED** lighting adapted for reading, activated automatically due to a motion sensor. Option of adjusting light intensity with a potentiometer. Adjustable lighting angle **+ -20°**. Color temperature **4300 K**, brightness **390 Lm**.

ACOUSTICS

Special **acoustic, tempered, laminated glass** with the increased sound insulation properties **$R_w=38$ dB** (EN ISO 10140, ISO 717-1).

Due to the solutions used, **confidentiality of conversations is ensured** – persons who are outside will not be able to hear what you are talking about. At the same time, external noise in the booth is significantly reduced.

Optimal reverberation time inside in order to conduct conversations in the comfortable manner.

The version that is upholstered outside improves additionally acoustic conditions in the room, **reducing reverberation**.

VENTILATION

Efficient ventilation system, used quiet fans with an air flow of **360 m³/h**.

The quantity of air has been adjusted so to ensure optimal user comfort. The system is completely **maintenance free and safe**.

Ventilation function – after leaving the booth, the ventilation will work for another 3 minutes to ensure comfort for the subsequent users.

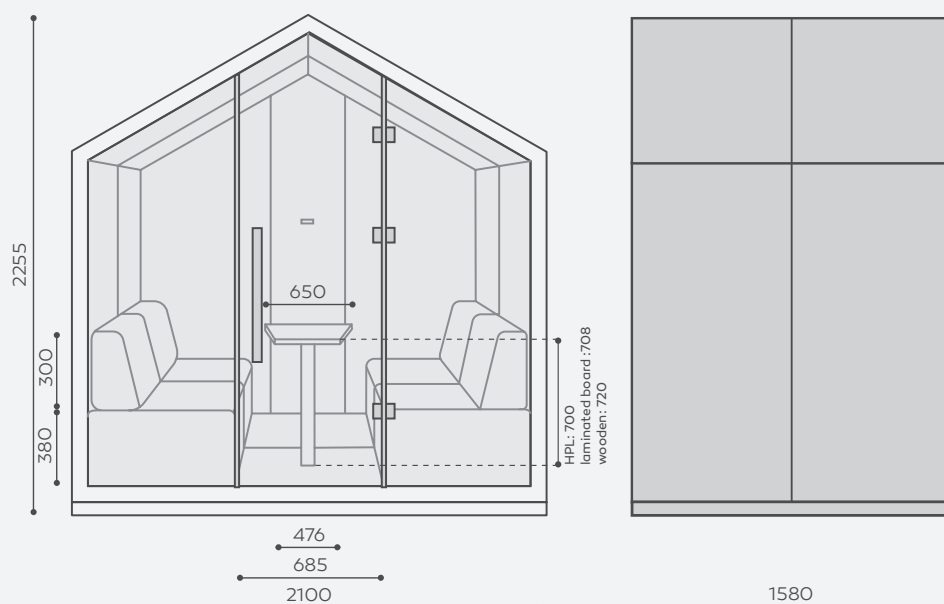
ELECTRICAL INSTALLATION

Safe electrical installation, components made in **12V** standard, with a total power of **24W**. The set includes two cables included: one for lighting and ventilation (length 1 m) and the other for media port (length 1 m) (plug: type E – Poland, France; type F – Germany; type G – United Kingdom).

MEDIA PORT

Media port with 230V socket (type E – Poland, France; type F – Germany; type G – Great Britain), **HDMI and 2x USB**.

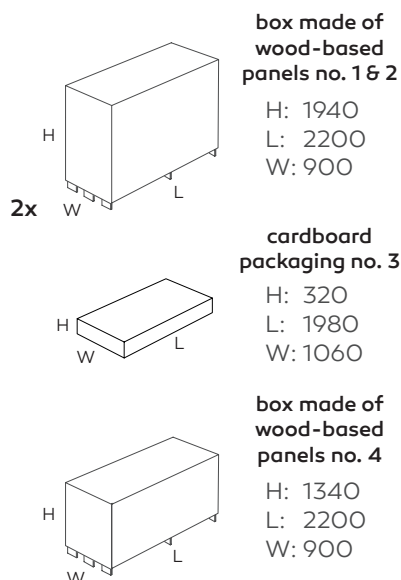
TECHNICAL DATA



Dimensions are expressed in millimetres. Dimensions are approximate and may vary depending on the selected product configuration. The requirements of the standard are always fulfilled.

The product sheet contains a description of the colour options, variants of the wall, floor and panel finishes, as well as the furnishing components possible to be installed.

PACKAGE



	TH 4	THW 4	TH 4 G1	THW 4 G1	TH 4 G2	THW 4 G2
net product weight	480	500	560	580	620	640
gross box weight no. 1	340	350	340	350	340	340
gross box weight no. 2	350	360	350	360	350	350
gross cardboard weight no. 3	80	80	-	-	-	-
gross box weight no. 4	-	-	300	300	360	380

THE CHANGES WE'VE MADE

BEFORE



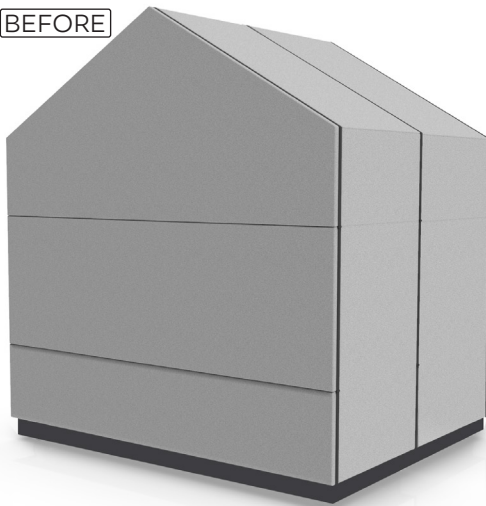
NOW



REGULATOR

In **TH GLASS** (version with glass) **we have added the ability to adjust the ventilation intensity**, which is why we have changed the two-stage light intensity regulator to a regulator that supports both light intensity and ventilation smoothly.

BEFORE



NOW



BACK WALL

For consistency with the other TH booths, the back wall has changed. We gave up longitudinal stitching. We have also added a metal frame, thanks to which the back is coherent with the front.

BEFORE



NOW



FLOOR

We have improved the direction of the wood grain on the floor so that the whole collection of TH booths acquires a coherent and harmonized look.



MAXFURNITURE.CO.UK

bejot:

Max Furniture LTD - 25 Britton Street,
Clerkenwell, London EC1M 5NY

phone: +44(0)207 608 1788
e-mail: info@maxfurniture.co.uk