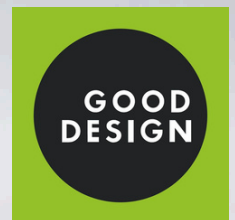


Calma Brochure



THE INTERNATIONAL EPD® SYSTEM



The mark of
responsible forestry



NAF
No Added
Formaldehyde



11957



Content



- Acoustic
- Lighting
- Air Quality
- Electrification
- Mobility
- Sustainability

Supply Chain

Products



- Calma S
- Calma Z/Z2
- Calma 2
- Calma 4
- Calma 4L
- Calma Pro
- For All

What you want before you need it.

Discover New Ways of Working

What do workspaces need today?

How are the demands and needs of people changing in our time?

Adapt to Work in Shared Spaces

The rise of hybrid and remote work models has reduced office occupancy while increasing the demand for shared office solutions in smaller spaces.

The Age of Meetings

Recent data shows that 83.13% of employees spend up to one-third of their week in meetings. Nearly half of them spend more than an hour, and 22.5% spend over two hours per session. This intense schedule drives the need for well-equipped, multi-purpose meeting areas in offices.

Need for Privacy

Constant exposure to noise makes it difficult for employees to stay focused and motivated. Calma provides quiet and comfortable spaces in shared offices for short breaks, privacy, or moments that require full concentration.

Adaptation to Working in Shared Spaces

Designed to adapt to the new generation of work culture, Calma combines modular structure, high acoustic performance, and mobility to offer an aesthetic and functional solution for personal space needs in any shared workspace.



Calma Acoustic Spaces

Engineered to create the perfect working conditions,
Calma preserves your health and well-being throughout long working hours.



The perfect proportion of a regular meeting room, Calma spaces provide **up to 17 times*** better air circulation within your workspace.



Calma pods uses **2700K**, dimmable ambient lights, aligning closer with **natural circadian rhythms**.

15+

With high engineering standards and carefully selected materials, Calma holds **more than 15 international certifications**.

*These figures are based on evaluating Calma Small and Calma For U with ventilation fans operating at 100% capacity.



Seven Sizes, Unlimited Flexibility



Calma Z/Z2

Best Video Conference Hub

100x140x224 cm
140x140x224 cm



Calma Small

Small Pod Great Function

100x110x224 cm



Calma 2

The Perfect One-on-One

100x220x224 cm



Calma For All

DDA Meeting pod

188x220x224 cm



Calma 4

Creative Collaboration Space

144x220x224 cm



Calma 4L

Strategic Meeting Space

188x220x224 cm



Calma Pro

Gather, Discuss, Innovate

276x220x224 cm





Acoustics

Reduced Noise, Improved Concentration

ISO
23351-1

Exposure to sound pollution can cause stress related cardiovascular disorders and make it harder to focus. A quick escape from noise, Calma creates the perfect space with **Class A Soundproofing, certified by ISO 23351-1.**

Ideal voice clarity is developed with the specially engineered multilayer acoustic system of Calma **to achieve 0,30 sec of reverberation time.** Allowing voices and sounds to be perceived clearly within the space.

Constantly tested and re-developed within Nurus' in-house Acoustic Lab, materials used to create Calma set new standards. Unlike others; Calma ensures **a balanced blockage of both low and high-frequency sounds.** This ongoing R&D makes Calma a leader in setting new benchmarks for the industry.

We Care About the Air You Breathe



All materials used in Calma acoustic pods are free from volatile organic compounds (**VOCs**) and **harmful chemicals**. Substances such as xylene, formaldehyde, acetone, chloroform, benzene, and toluene are completely excluded. Ensuring clean, safe air inside for long hours.

Engineered to maintain constant fresh air circulation, The CO2 level inside remains **below 1000 ppm** with air refreshed **up to 106 times per hour***, offering **up to 17 times better air circulation than a standard meeting room**. Fan power can be easily adjusted through the integrated touchscreen inside the pod.

Additionally, during the order phase, the dual ventilation system can be configured to direct airflow from either the upper or lower vents.

*These figures are based on evaluating Calma For U with ventilation fans, operating at 100% capacity.





Reducing Stress is More Important Than Ever

Have you experienced visual strain lately?
Long hours of exposure to light can cause **chronic headaches** and distractions.

Calma uses the closest possible light temperature and brightness to **a calming sunset (2700K)**. Using warm light amplifies Calma's affects on well-being, aligning closer with **circadian rhythms** and preferences.

Engineered and carefully calculated lighting distribution ensures that everyone in the meeting has **enough light to work** and look their best during long hours of meetings or focus group work.

Create Perfect Workspace Conditions

Stay seamlessly connected with **Calma's thoughtful design**, featuring convenient Links modules with multi-national sockets, USB ports, and HDMI connections within the pod. Constant secure and stable connections with Media Wall, Links modules, and high quality electrification & lighting components **ensures you look your best at all times.**

Providing one of the best video conference performances, Calma Z & Z2's Media Wall integration is engineered for creating the optimal workspace and **digital communication experience.**

Media Wall is an optional integration, only available for Calma Z.

A standard media wall includes:

- 1 Links Unit that contains:
 - 2 pcs 220-240 VAC power socket (Max Output Power 750W)
 - 1 pc USB A+C charger
 - 1 pc RJ45 Ethernet data sockets

- 2 units of Dimmable Facelights:
Optimised digital communication,
controlled by the integrated
touch panel of Calma Z.

Behind the screen there are
2 standard connections:

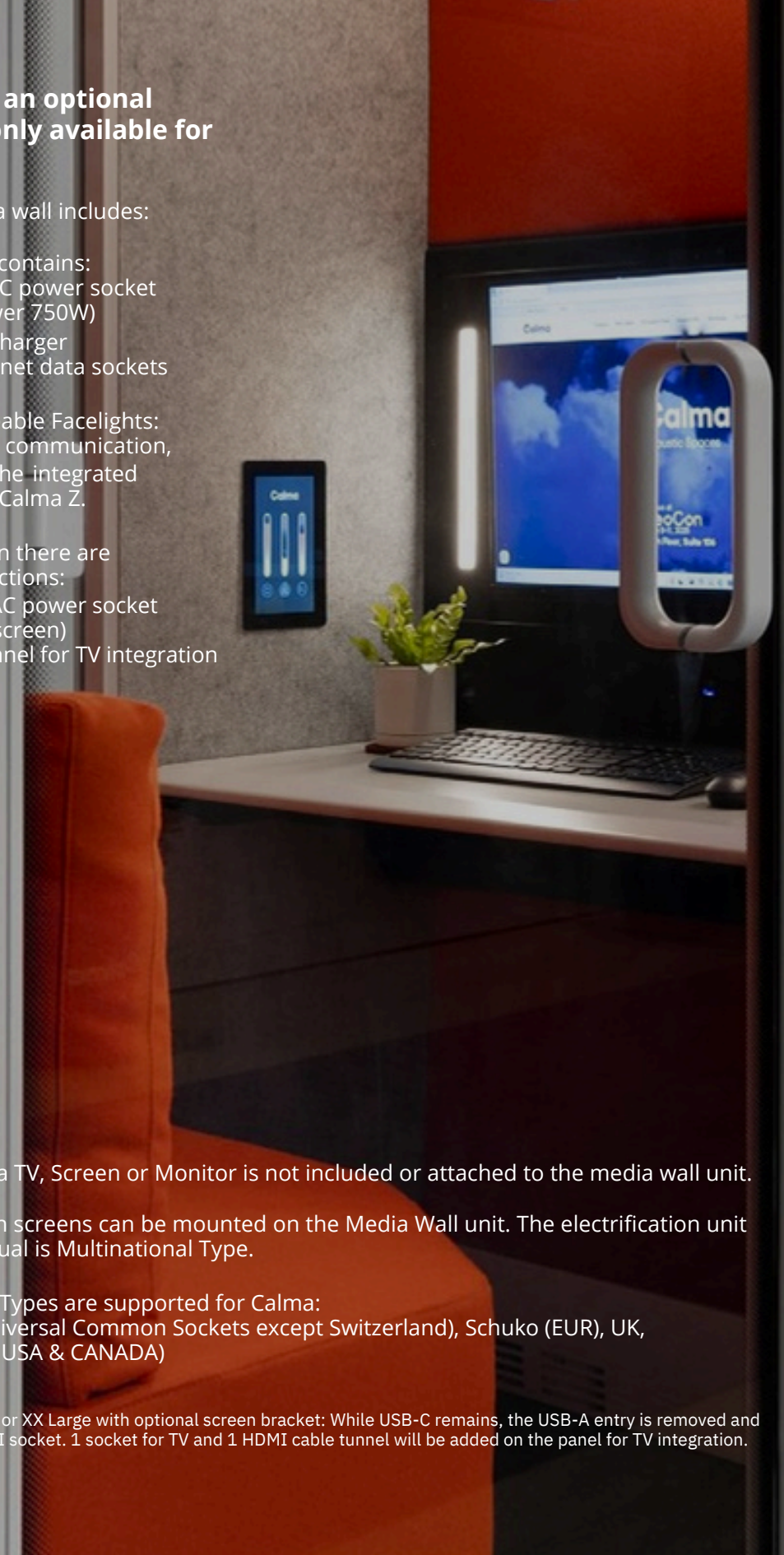
- 1 pc 220-240 VAC power socket
(for mounting screen)
- HDMI cable tunnel for TV integration

Please note that a TV, Screen or Monitor is not included or attached to the media wall unit.

Maximum 27 inch screens can be mounted on the Media Wall unit. The electrification unit shown on the visual is Multinational Type.

Following Socket Types are supported for Calma:
Multinational (Universal Common Sockets except Switzerland), Schuko (EUR), UK,
US (NEMA 5-15R, USA & CANADA)

*Calma Large, X Large or XX Large with optional screen bracket: While USB-C remains, the USB-A entry is removed and replaced with an HDMI socket. 1 socket for TV and 1 HDMI cable tunnel will be added on the panel for TV integration.





Workspaces are Organic Environments



Calma spaces, up to Large, have castors to help easily relocate. Built upon its floor plate like legos, **the modular components of Calma are easily assembled and installed.**

All finishes and materials of Calma pods are selected in neutral shades for blending in perfectly with the surrounding environment. **Calma supports any sudden changes needed in office layouts,** and safety is always paramount with seismic foot plates, **providing stability and security** in the rare event of earthquakes.

A Complete Cycle of Production

We Are The Supply Chain

All Calma spaces are crafted within Nurus' extensive **45,000 sqm technology base with 95% vertical integration and a century of expertise.**

Every step of production is meticulously tracked, ensuring reliability and resilience against external influences. This **fully in-house, circular system** not only guarantees superior product quality but also **significantly reduces Scope 3 Carbon Footprint, setting a new standard in the industry.**

With headquarters in Ankara and warehouses in Germany and North America, Calma products are delivered punctually through our **extensive distribution network**, ensuring safe and timely delivery to our **45+ global sales points**, every time.

16 Main Production Lines

- HDF Powder Coating Process
- Mould, Die & Tool Building
- Aluminium Injection Moulding
- Plastic Injection Moulding
- Metal Powder Coating
- Tubular & Sheet Laser Metal Processing
- PU & Liquid Plastics: Foam and Rigid
- Panel Processing: Engineered Wood
- Timber & Veneer Processing: Natural Wood
- Furniture Coatings
- Upholstery & Sewing
- Service & Delivery Network
- Advanced Automation & Robotics Integration
- Accredited R&D Center for Office Furniture
- In-house Reverberation Room & Acoustics Lab
- Advanced Polymer Research Lab



High Quality Promise



Resilient Production



Independent Processes



Carbon Footprint Reduction



Exceptional Lead Time

Calma: Built to Sustain, Committed to Health

Calma pods are made with 100% solar energy and our unwavering dedication to sustainability.



“Calma exemplifies commitment to environmental sustainability through its efficient, innovative manufacturing processes and use of eco-friendly materials. Manufactured within a 95% vertically integrated facility, the circular production system minimizes Scope 3 Carbon emissions.”

Calma pods are crafted using a zero-waste, HDF powder coating process, which eliminates any VOC (organic and inorganic) emissions and results in a fine-grained, antibacterial surface that is easy to clean and maintain. This process also uses lower heat (130-140°C) for curing a thermoset, durable surface, reducing energy consumption compared to traditional methods.

Calma’s structure incorporates responsibly sourced materials, including FSC certified wood, and 50% recycled PET felt.

Calma holds multiple certifications, including Indoor Air Quality Gold, supported using Basotect G+ layers instead of conventional stone-wool insulations, enhancing both acoustic performance and environmental sustainability. Additionally, Calma’s packaging is made from 100% recyclable materials, further minimizing its environmental impact.

Calma holds an Environmental Product Declaration (EPD) certification, which objectively analyzes and evaluates its environmental impacts. Prepared in accordance with ISO 14025 and ISO 15804 standards, this declaration serves as a document that scientifically and comprehensively analyzes the environmental impacts of the product throughout its life cycle.

By integrating sustainable manufacturing techniques, renewable energy sources, and recyclable components, Calma For U sets a new standard for sustainable workplace solutions. It not only meets but exceeds current environmental standards, making it an excellent choice for organizations committed to sustainability.



Sustainability

Good Products Choose Their Own Material

Calma is layered with **Basotect G+** for superior soundproofing and Indoor Air Quality. Coated with industry-leading HDF powder coating technology, Calma ensures **a durable, healthy, and sustainable life cycle** with very low VOC emissions, supporting a sustainable life cycle.

Basotect G+

Calma integrates Basotect® G+, a lightweight melamine foam combining exceptional sound absorption with minimal material use. Its **durability, low density and ultra-low VOC emissions** make it the smart choice for healthier interiors and efficient resource use, perfectly aligned with Calma's sustainability vision.

HDF Powder Coating

Using HDF powder coating, Calma enhances durability and moisture resistance while providing a smooth finish. HDF powder coatings are **virtually VOC-free and cure at lower temperatures, helping to reduce energy consumption**. By combining durability with ultra-low VOC performance, this technology supports **healthier indoor spaces and Calma's commitment**

to sustainability.



Calma

Calma S

Calma Z

Calma Z2

Calma 2

Calma 4

Calma 4L

Calma Pro

Calma For All

Calma Small

Small Pod, Great Function



39.4x43.3x88.1 in / 100x110x224 cm



ISO
23351-1

Class A Certified Soundproofing

Immediate Noise
Reduction

Calma holds **Class A**
soundproofing according
to **ISO 23351-1 / 2021**

Excellent Voice Clarity

Optimized Acoustic
Experience

Unlike others, Calma
ensures a good sound
reduction experience
with its **0.30 sec**
reverberation time



VOC Free for Better Air Quality

Cleaner Air,
Better Health

Ensuring excellent air
quality, Calma components
are **free from Volatile
Organic & Inorganic
Compound emissions**



Adjustable Features

Dynamic Work
Settings

Calma features
adjustable desk and stool
height, encouraging
movement and providing
a sense of control over
your environment
at all times.

pCon

Calma
Small





1. Optional Occupancy Lights

Viewing the pod's availability.

2. Dimmable Lighting

2700K warm lighting.

3. Recycled PET Felt

Sustainable felt panelling.

4. Motion Detecting PIR Sensor

Automatic light and fan activation system.

5. Eco-Friendly Fabric
Fabric options with OEKO-TEX and EU Eco Label certification.

6. Desktop Socket
Desktop sockets provide a secure and stable connection for your devices.

7. Basotect G+ Acoustic Layering
Healthy and balanced acoustic layering for both high and low frequencies.

8. Optional Height Adjustable Desk and Stool
Adjustable desk and stool height for creating optimal conditions.

9. Castors & Seismic Footplates

Built-in footplates for safety, castors for mobility.

10. Air Ventilation

Double Redundancy Fans.

11. Tempered Glass
12 mm tempered glass door and 5+5 mm laminated glass with PVB acoustic interlayer windows.

12. Coat Hangers
One coat hanger positioned between the two fabric panels.

13. Optional Housing for Sprinklers

A Ø54 mm housing can be opened on the ceiling.

One of the Biggest Spaces for One Person

With 1,1 sqm space, Calma Small provides a bigger space compared to traditional one-person booths, enhancing privacy with perfected conditions for tasks requiring high focus.

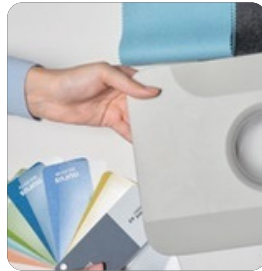


We Care About The Air You Breathe

Our acoustic pods are crafted entirely from non-toxic materials, ensuring that your health is never compromised. There are no Xylenes, formaldehyde, acetone, chloroform, benzene, or toluene in Calma, providing long hours of fresh, VOC free air.

Superior Comfort with Adjustable Features

Calma is equipped with a height adjustable table and stool, allowing you to create the perfect setting for your tasks and sustain your focus for longer hours. The adjustable ventilation and dimmable lights also provide a sense of control over your workspace at all times.



Easy Installation

Straight forward and simple, Calma's assembly and installation is as easy as stacking blocks on top of one another. All Pods are shipped in 100% recyclable packaging and wooden crates.

Desktop Socket & Links

Desktop socket and Links modules above the kickplate provides a secure and stable connection for your devices

Mobility

Calma Small is equipped with wheels for easy transport, supporting the quick changes you need in your office arrangements.

Customization

Calma pods offer different fabric and color options. Accordingly, users can choose colors that suit their own style, allowing them to personalize their workspace in an aesthetic and functional way.

Calma Z

Best Video Conference Hub



39.4x55.1x88.1 in / 100x140x224 cm



ISO
23351-1



Class A Certified Soundproofing

Excellent Voice Clarity

VOC Free for Better Air Quality

Broadcast Quality Lighting

Immediate Noise
Reduction

Optimized Acoustic
Experience

Cleaner Air,
Better Health

Integrated Lighting
to Look Your Best

Calma holds **Class A**
soundproofing according
to **ISO 23351-1 / 2021**

Unlike others, Calma
ensures a good sound
reduction experience
with its **0.30 sec**
reverberation time

Ensuring excellent air
quality, Calma components
are **free from Volatile**
Organic & Inorganic
Compound emissions

Engineered **2700 K**
Dimmable ambient & face
lights for optimal video
conference experience.

pCon

Calma

Calma Z





1. Optional Occupancy Lights
Viewing the pod's availability..

2. Dimmable Lighting
2700K warm lighting.

3. Recycled PET Felt
Sustainable felt panelling.

4. Motion Detecting PIR Sensor
Automatic light and fan activation system.

5. Eco-Friendly Fabric
Fabric options with OEKO-TEX and EU Eco Label certification.

6. Optional Reservation Screen
Access the reservation system and create instant meetings

7. Basotect G+ Acoustic Layering
Healthy and balanced acoustic layering for both high and low frequencies.

9. Castors & Seismic Footplates
Built-in footplates for safety, castors for mobility.

8. Media Wall Integration
The full set for digital communication, Media Wall contains Links module of HDMI, ethernet and power sockets. Built-in TV Bracket (mx 27 in) for ideal screen use.

10. Broadcast Quality Face Lighting
2700K face lights providing perfect appearance on screen, every time.

11. Air Ventilation
Double Redundancy Fans.

12. Tempered Glass
12 mm tempered glass door and 5+5 mm laminated glass with PVB acoustic interlayer windows.

13. Retractable Desk
Adjustable depth for creating optimal conditions.

14. Coat Hangers
One coat hanger positioned between the two fabric panels.

15. Optional Housing for Sprinklers
A Ø54 mm housing can be opened on the ceiling.

Adjustable Features for Dynamic Work Settings
Calma Z features a retractable, built-in desk for seat depth adjustment and media wall integration, allowing you to create the perfect meeting conditions within the pod.



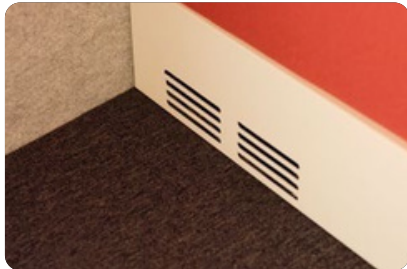
Optimized Digital Communication

The media wall integration is engineered for the perfect video conference experience. Always ready to provide a stable connection with Links module and face lights to make sure you look your best.



Reduced Visual Strain

Long hours of exposure to light can cause chronic headaches and distractions. To minimize visual strain, Calma uses warm and flicker-free 2700K lights.



Constant Fresh Air

Our acoustic pods are crafted entirely from VOC free materials, ensuring that your health is never compromised. Engineered to maintain constant fresh air circulation, Calma ensures carbon levels below 1000 ppm and air exchange 106 times per hour.



Easy Installation

Straight forward and simple, Calma's assembly and installation is as easy at stacking blocks on top of one another. All Pods are shipped in 100% recyclable packaging and wooden crates.



Customize Your Comfort

Customized comfort with adjustable ventilation and dimmable lights offers ongoing control over your workspace. Calma For U features a retractable, built-in desk for depth adjustment and media wall integration, allowing you to create the perfect meeting conditions within the space.

Calma Z2

Best Video Conference Hub for 2 persons

140x140x224 cm



ISO
23351-1

Class A Certified Soundproofing

Immediate Noise
Reduction

Calma holds **Class A**
soundproofing according
to **ISO 23351-1 / 2021**



Excellent Voice Clarity

Optimized Acoustic
Experience

Unlike others, with its
**0.30 sec reverberation
time**, Calma ensures a
good sound reduction
experience.



VOC Free for Better Air Quality

Cleaner Air,
Better Health

Ensuring excellent air
quality, Calma pod
components are free from
Volatile Organic & Inorganic
Compound emissions



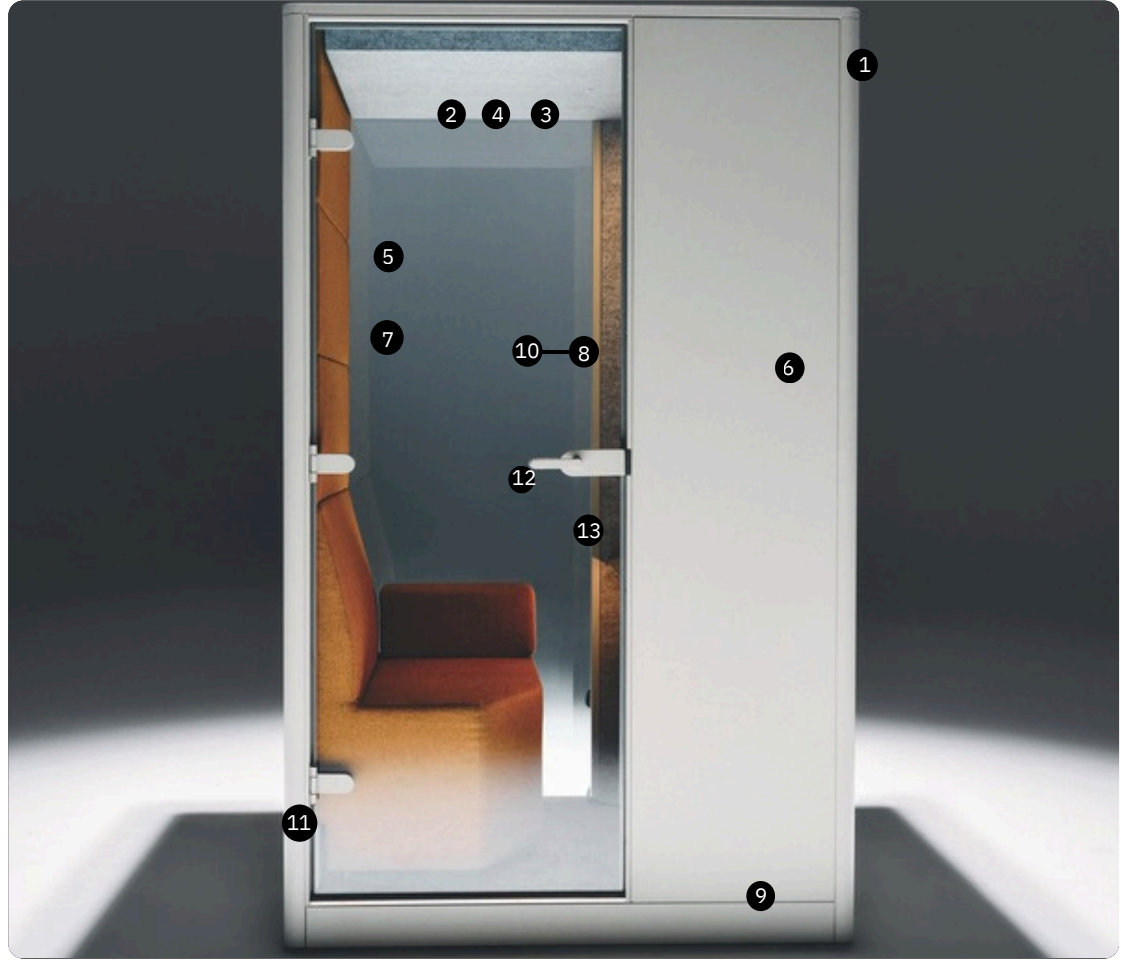
Broadcast Quality Lighting

Integrated Lighting
to Look Your Best

Engineered **2700 K**
Dimmable ambient &
facelight for optimal video
conference experience.

Calma Z2





Adjustable Features for Dynamic Work Settings

Calma Z2 features a retractable, built-in desk for seat depth adjustment and media wall integration, allowing you to create the perfect meeting conditions within the pod. The only 2-person Video-Conferencing pod on the market.



Optimized Digital Communication

The media wall integration is engineered for the perfect video conference experience. Always ready to provide a stable connection with Nurus Links and broadcast lights to make sure you look your best.

Reduced Visual Strain

Long hours of exposure to light can cause chronic headaches and distractions. To minimize visual strain, Calma uses daylight-mimicing and flicker free 2700K lights.



Easy Installation

Calma’s assembly and installation is as easy at stacking blocks on top of one another. Straightforward and simple. All Pods are shipped in 100% recyclable packaging and wooden crates

Customize Your Comfort

With adjustable ventilation and dimmable lights, it gives you the feeling of always having control over your workspace.

Constant Fresh Air

Our acoustic pods are crafted entirely from No VOC materials, ensuring that your health is never compromised. Engineered to maintain constant fresh air circulation, Calma ensures carbon levels below 1000 ppm and air exchange 106 times per hour.

- 1. Occupancy Light**
Viewing availability of pod

2. Dimmable Lighting
2700K warm lighting

3. 50% Recycled PET Felt
Sustainability Felt panelling

4. Motion Detecting Sensor
Automatic light and fan activation system
- 5. Eco-Friendly Fabric**
Fabric options with OEKO-TEX and Eco Label certification

6. Reservation Screen
View the daily circulation and usage of the pod

7. Basotect G+ Acoustic Layering
Health and balanced acoustic layering for both high and low frequencies

8. Media Wall
The full set for digital communication, Media Wall contains NurusLinks module with HDMI, Ethernet and Power sockets. Built-in TV Bracket allows the ideal screen use.
- 9. Seismic Footplates**
Built-in footplates for safety

10. Broadcast Lighting
2700K face lights providing perfect apperance on screen everytime

11. Customizable Air Flow Direction
Double Redundancy Fans

12. Tempered Glass
12 mm tempered glass door and windows

13. Retractable Desk
Adjustable seat depth for creating optimal conditions

Calma 2

Supporting Different Working Styles



39.4x86.6x88.1 in / 100x220x224 cm



ISO
23351-1

**VOC Free for
Better Air Quality**

Cleaner Air,
Better Health

Ensuring excellent
air quality, Calma
components are **free
from Volatile Organic &
Inorganic Compound
emissions**

**Class A Certified
Soundproofing**

Immediate Noise
Reduction

Calma holds **Class A**
soundproofing according
to **ISO 23351-1 / 2021**



**Excellent
Voice Clarity**

Optimized Acoustic
Experience

Unlike others, Calma
ensures a good sound
reduction experience
with its **0.30 sec
reverberation time**



**Widest
Central Wall**

Optimal
Screen / Space Ratio

The perfect screen
ratio within a **2.2 sqm
workspace**, Calma
Medium offers an
excellent one-on-one
meeting experience

pCon

Calma





1. Optional Occupancy Lights

Viewing the pod's availability.

5. Eco-Friendly Fabric
Fabric options with OEKO-TEX and EU Eco Label certification.

9. Castors & Seismic Footplates

Built-in footplates for safety,

13. Optional Soft Seating
Calma Medium has optional, built-in cushioned seating.

2. Dimmable Lighting

2700K warm lighting.

6. Multinational Connection

Integrated Links module.

10. Air Ventilation

Double Redundancy Fans.

14. Coat Hangers
Two coat hangers positioned between the two fabric panels.

3. Recycled PET Felt

Sustainable felt panelling.

7. Basotect G+ Acoustic Layering

Healthy and balanced acoustic layering for both high and low frequencies.

11. Tempered Glass

12 mm tempered glass door and 5+5 mm laminated glass with PVB acoustic interlayer windows.

15. Optional Housing for Sprinklers

A Ø54 mm housing can be opened on the ceiling.

4. Motion Detecting PIR Sensor

Automatic light and fan activation system.

8. 32-inch TV Screen Bracket

Perfect Wall / Screen Ratio for meetings

12. Meeting Table

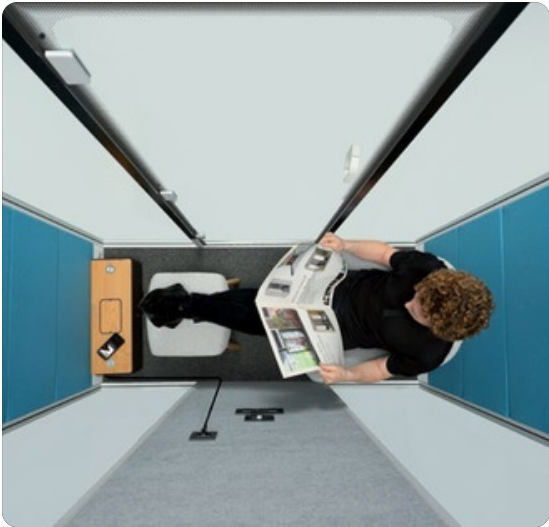
HDF Powder Coated meeting table.

The Brainstorming Space
Experience perfect one-on-one meetings. With the optional TV bracket, Calma 2 draws attention directly to the screen, keeping you engaged through- out your meetings.



Reduced Noise, Improved Concentration

Exposure to sound pollution causes stress-related cardiovascular disorders. A quick escape from noise, Calma creates the perfect space with class A soundproofing and perfect voice clarity with balanced blockage of low and high-frequency sounds.



Your Private Office

Calma Medium provides a fluid working environment to suit your everchanging needs in the workplace. Whether needed for reading, privacy, or brainstorming, Calma Medium provides a better work experience.



Adjustable Lighting

With adjustable ventilation and dimmable lights, Calma gives you the feeling of always having control over your workspace.



Easy Installation

Straight forward and simple, Calma's assembly and installation is as easy at stacking blocks on top of one another. All Pods are shipped in 100% recyclable packaging and wooden crates.



Perfect Screen / Space Ratio

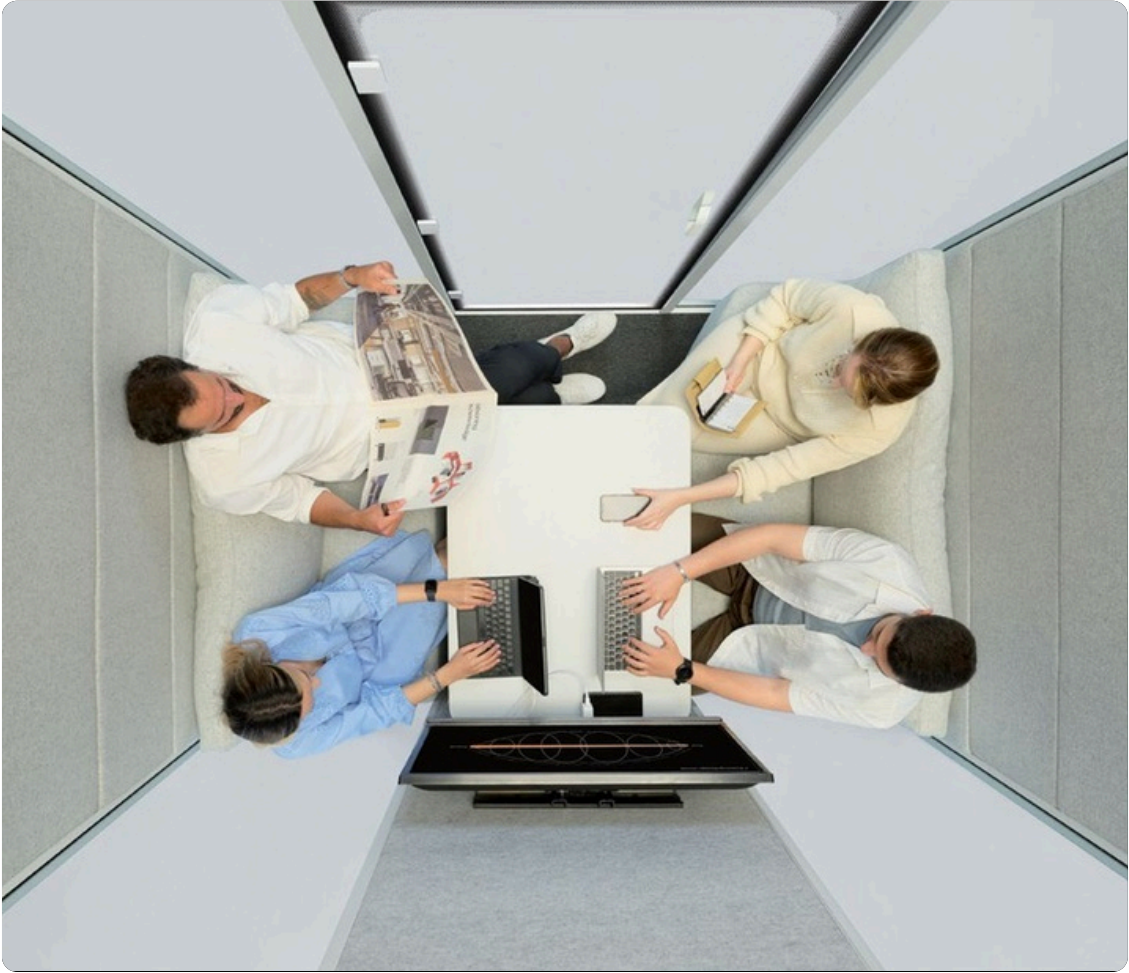
The 32 inch screen brackets allows ample viewing space for presentations, video conferences, and group work, while being of a size that can be placed harmoniously without disrupting the room's aesthetics.

Calma 4

Engineered to Amplify Working Environments



56.6x86.6x88.1 in / 144x220x224 cm



VOC Free for Better Air Quality

Cleaner Air,
Better Health

Ensuring excellent air quality, Calma components are **free from Volatile Organic & Inorganic Compound emissions**



Class A Certified Soundproofing

Immediate Noise Reduction

Calma holds **Class A** soundproofing according to **ISO 23351-1 / 2021**



Superb Airflow

Constant Fresh Air Circulation

Engineered for superior airflow, Calma's system exchanges air 77 times per hour, ensuring optimal indoor air quality.



Maximum Comfort in 3 sqm

Built-in Soft Seating

Perfect for 2-4 people use, soft seating offers superior comfort inside a spacious workspace.





1. Optional Occupancy Lights

Viewing the pod’s availability.

5. Eco-Friendly Fabric

Fabric options with OEKO-TEX and EU Eco Label certification.

9. Seismic Footplates

Built-in footplates for safety.

12. Meeting Table

HDF Powder Coated meeting table.

2. Dimmable Lighting

2700K warm lighting.

6. Multinational Connection

Integrated Links module.

10. Air Ventilation

Double Redundancy Fans.

13. Optional Soft Seating

Calma Large has optional, built-in cushioned seating.

3. Recycled PET Felt

Sustainable felt panelling.

7. Basotect G+ Acoustic Layering

Healthy and balanced acoustic layering for both high and low frequencies.

11. Tempered Glass

12 mm tempered glass door and 5+5 mm laminated glass with PVB acoustic interlayer windows.

14. Coat Hangers

Two coat hangers positioned between the two fabric panels.

4. Motion Detecting PIR Sensor

Automatic light and fan activation system.

8. 32-inch TV Screen Bracket

Perfect Wall / Screen Ratio for meetings

15. Optional Housing for Sprinklers

A Ø54 mm housing can be opened on the ceiling.

The Perfect Comfort Zone for Groups
The ideal workspace for 2-4 people meetings, Calma 4 is the ideal option for casual meetings with comfortable built-in seating.



We Care About The Air You Breathe

Our acoustic pods are crafted entirely from non-toxic materials, ensuring that your health is never compromised. There are no Xylenes, formaldehyde, acetone, chloroform, benzene or toluene in Calma, providing long hours of fresh, VOC free air.



Reducing Stress is More Important Than Ever

Calma uses flicker-free, closest possible light temperature and brightness to daylight. Daylight-mimicking amplifies the pod’s effects on well-being, aligning closer with circadian rhythms and preferences, evenly distributed within its space.



Easy Installation

Straight forward and simple, Calma’s assembly and installation is as easy at stacking blocks on top of one another. All Pods are shipped in 100% recyclable packaging and wooden crates.



Adjustable Lighting

With adjustable ventilation and dimmable lights, Calma gives you ongoing control over your workspace.



Soft Seating

Cushioned seating areas provide maximum comfort for group meetings.



Customization

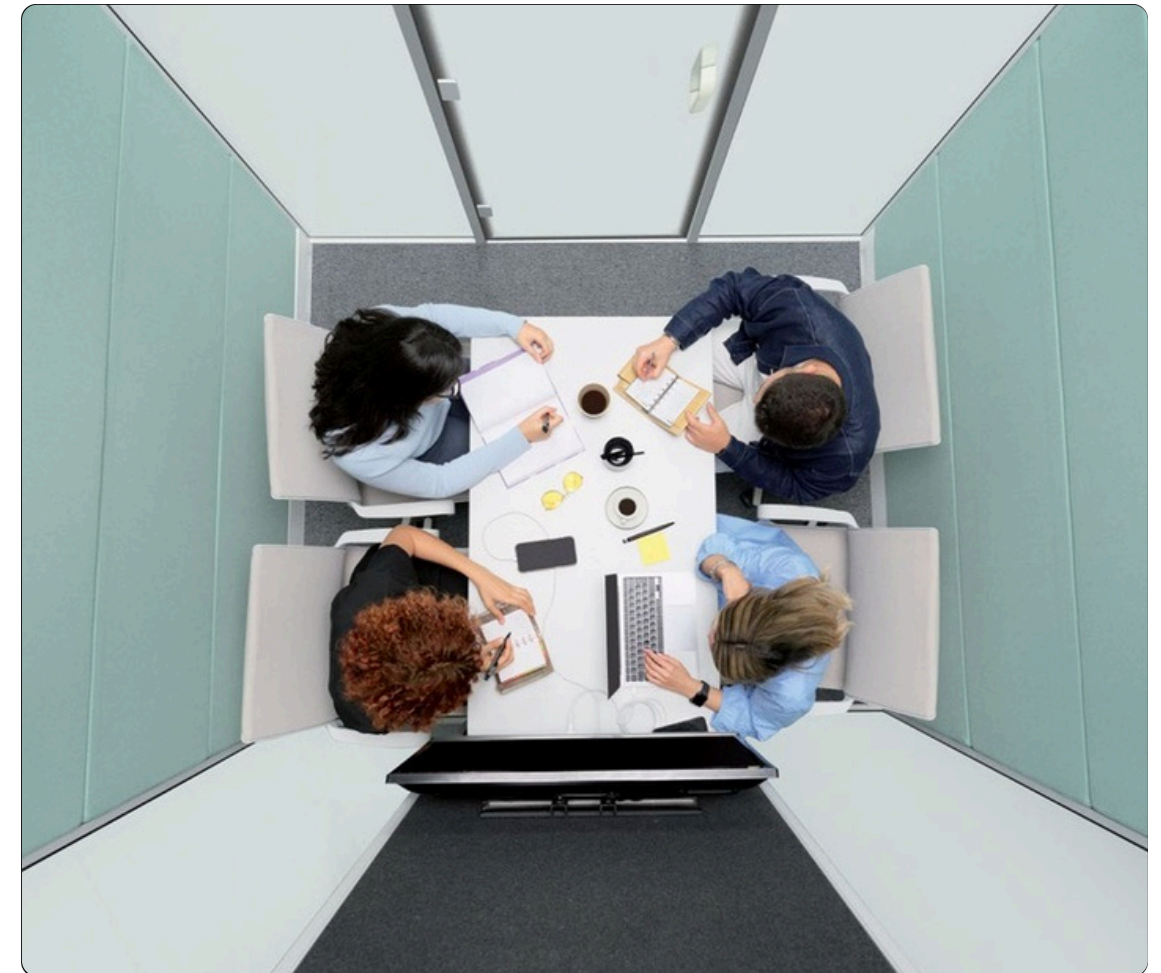
Calma pods offer different fabric and color options. Accordingly, users can choose colors that suit their own style, allowing them to personalize their workspace in an aesthetic and functional way.

Calma 4L

Create Corporate Culture Through Synergy



74x86.6x88.1 in / 188x220x224 cm



ISO
23351-1

**VOC Free for
Better Air Quality**

Cleaner Air,
Better Health

Ensuring excellent
air quality, Calma
components are **free
from Volatile Organic &
Inorganic Compound
emissions**

**Class A Certified
Soundproofing**

Immediate Noise
Reduction

Calma holds **Class A**
soundproofing according
to **ISO 23351-1 / 2021**



**Even Lighting
Distribution**

Engineered
Lighting for All

Calma Pods uses **2700K
warm lighting**, similar
to a calming sunset,
for reducing stress and
visual strain.



**Easy
Installation**

Simple and Functional
Set-Up

Carefully packed with
all components placed
in order of installation,
**Calma can be
assembled at ease.**

pCon

Calma

Calma 4L





- 1. Optional Occupancy Lights**
Viewing the pod's availability.

5. Eco-Friendly Fabric
Fabric options with OEKO-TEX and EU Eco Label certification.

9. Seismic Footplates
Built-in footplates for safety.

12. Meeting Table
HDF Powder Coated meeting table.
- 2. Dimmable Lighting**
2700K warm lighting.

6. Multinational Connection
Integrated Links module.

10. Air Ventilation
Double Redundancy Fans.

13. Coat Hangers
Two coat hangers positioned between the two fabric panels.
- 3. Recycled PET Felt**
Sustainable felt panelling.

7. Basotect G+ Acoustic Layering
Healthy and balanced acoustic layering for both high and low frequencies.

11. Tempered Glass
12 mm tempered glass door and 5+5 mm laminated glass with PVB acoustic interlayer windows.

14. Optional Housing for Sprinklers
A Ø54 mm housing can be opened on the ceiling.
- 4. Motion Detecting PIR Sensor**
Automatic light and fan activation system.

8. 32-inch TV Screen Bracket
Perfect Wall / Screen Ratio for meetings

The Perfect Meeting Space Exists

The ideal workspace for 4 people group meetings, Calma 4L creates the ideal conditions for working together for long hours at ease.



Multi-national Electrification Module

Stay seamlessly connected with Calma's thoughtful design. Practical Links modules, multi-national electrification module, USB ports, and HDMI connections within the cabin ensure a secure and stable connection at all times.



Occupancy Light

The occupancy indicator in Calma allows you to easily see from the outside whether the pod is occupied. This feature facilitates efficient space sharing among users and helps prevent time loss.



Easy Installation

Straight forward and simple, Calma's assembly and installation is as easy at stacking blocks on top of one another. All Pods are shipped in 100% recyclable packaging and wooden crates.



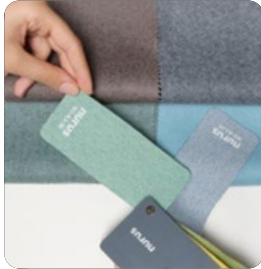
Air Ventilation

The double redundancy fans air flow direction can be reversed upon request.



Motion Detecting Sensor

Automatic light and fan activation system.



Customization

Calma pods offer different fabric and color options. Accordingly, users can choose colors that suit their own style, allowing them to personalize their workspace in an aesthetic and functional way.

Calma Pro

Work in a Multi-Disciplinary Environment



108.6x86.6x88.1 in / 276x220x224 cm



VOC Free for Better Air Quality

Cleaner Air,
Better Health

Ensuring excellent air quality, Calma components are **free from Volatile Organic & Inorganic Compound emissions**

ISO
23351-1

Class A Certified Soundproofing

Immediate Noise Reduction

Calma holds **Class A** soundproofing according to **ISO 23351-1 / 2021**



Superb Airflow

Constant Fresh Air Circulation

Engineered for superior airflow, Calma's system exchanges air 44 times per hour, ensuring optimal indoor air quality.



Even Lighting Distribution

Engineered Lighting for All

Calma Pods uses **2700K warm lighting**, similar to a calming sunset, for reducing stress and visual strain.

pCon



1. Optional Occupancy Lights

Viewing the pod's availability.

2. Dimmable Lighting

2700K warm lighting.

3. Recycled PET Felt

Sustainable felt panelling.

4. Motion Detecting PIR Sensor

Automatic light and fan activation system.

5. Eco-Friendly Fabric
Fabric options with OEKO-TEX and EU Eco Label certification.

6. Multinational Connection
Integrated Links module.

7. Basotect G+ Acoustic Layering
Healthy and balanced acoustic layering for both high and low frequencies.

8. 32-inch TV Screen Bracket
Perfect Wall / Screen Ratio for meetings

9. Seismic Footplates

Built-in footplates for safety. Double Redundancy Fans.

10. Air Ventilation

13. Coat Hangers
Two coat hangers positioned between the two fabric panels.

11. Tempered Glass

12 mm tempered glass door and 5+5 mm laminated glass with PVB acoustic interlayer windows.

14. Optional Housing for Sprinklers

A Ø54 mm housing can be opened on the ceiling.

12. Full Length Meeting Table
200 cm long meeting table for large gatherings.

Actually, Six Isn't A Crowd

The ideal workspace for large gatherings, Calma Pro provides a highly customizable meeting space for your teams.



32-inch TV Screen Bracket

These screens provide ample viewing space for presentations, video conferences, and group work, while being of a size that can be placed harmoniously without disrupting the room's aesthetics.



Collaborate with Different Disciplines

Whether brainstorming, developing a project or just jamming, Calma allows you to form deeper connections with colleagues to find better solutions – together.



Easy Installation

Straight forward and simple, Calma's assembly and installation is as easy at stacking blocks on top of one another. All Pods are shipped in 100% recyclable packaging and wooden crates.



Adjustable Lighting

With adjustable ventilation and dimmable lights, Calma gives you ongoing control over your workspace.



Multi-national Electrification Module

Stay seamlessly connected with Calma's thoughtful design. Practical Links modules, multi-national electrification module, USB ports, and HDMI connections within the cabin ensure a secure and stable connection at all times.



Customization

Calma pods offer different fabric and color options. Accordingly, users can choose colors that suit their own style, allowing them to personalize their workspace in an aesthetic and functional way.

Calma For All

The Collaborative Collective



74x86.6x88.1 in / 188x220x224 cm



VOC Free for Better Air Quality

Cleaner Air, Better Health

Ensuring excellent air quality, Calma pod components are free from Volatile Organic & Inorganic Compound emissions



Excellent Voice Clarity

Optimized Acoustic Experience

Unlike others, Calma ensures a good sound reduction experience with its **0.30 sec reverberation time**



Even Lighting Distribution

Engineered Lighting for All

Calma Pods uses 2700K lighting, mimicing daylight for reducing stress and visual strain.



Designed For All

Inclusive, Connected & Dynamic

A truly accesible workspace where collaboration knows no barries.



1. Optional Occupancy Lights

Viewing the pod’s availability.

5. Eco-Friendly Fabric

Fabric options with OEKO-TEX and EU Eco Label certification.

9. On the Ground

Calma For All is installed directly at floor level, allowing easy entry for all users.

13. Coat Hangers

Two coat hangers positioned between the two fabric panels.

2. Dimmable Lighting

2700K warm lighting.

6. Multinational Connection

Integrated Links module.

10. Air Ventilation

Double Redundancy Fans.

14. Optional Housing for Sprinklers

A Ø54 mm housing can be opened on the ceiling.

3. Recycled PET Felt

Sustainable felt panelling.

7. Basotect G+ Acoustic Layering

Healthy and balanced acoustic layering for both high and low frequencies.

11. Tempered Glass

12 mm tempered glass door and 5+5 mm laminated glass with PVB acoustic interlayer windows.

4. Motion Detecting PIR Sensor

Automatic light and fan activation system.

8. Foldable Built-in Seating

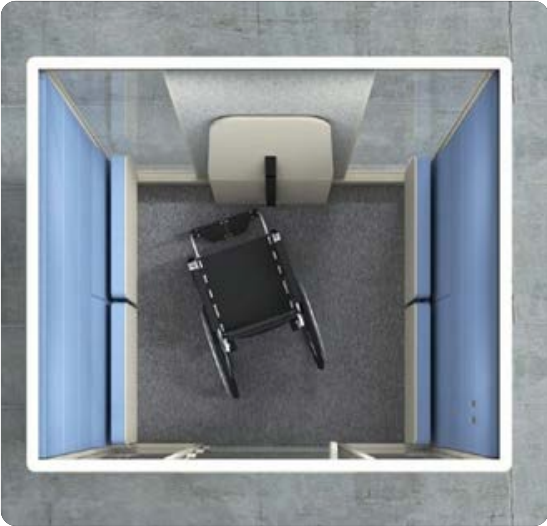
The seat inside Calma For All folds up automatically when the user stands, ensuring the pod is always easy to enter.

12. Foldable Meeting Table

The integrated table can be folded down manually while inside for meetings or focused work.

The Collaborative Collective

With wheelchair-friendly design and interactive tools, this fluid, idea-first environment ensures everyone has a seat at the table.



All The Space You Need for Circular Motion

Calma For All’s thoughtfully designed interior, with its automatically folding features and spacious layout, facilitates circular wheelchair movement. Its design aligns with the guidance provided in 2010 ADA Standards for Accessible Design, Section 304.3.1, regarding circular turning spaces.



Door Closing Mechanism

Calma For All features a mechanism for closing its door, designed to enhance accessibility. The door closes softly once the applied pressure is released.



Lighting and Ventilation

With adjustable ventilation and dimmable lights, Calma gives you the feeling of always having control over your workspace.



Easy Installation

Straight forward and simple, Calma’s assembly and installation is as easy as stacking blocks on top of one another. All Pods are shipped in 100% recyclable packaging and wooden crates.



Foldable Built-in Features

Foldable seats return to their upright (closed) position when not in use, and fold down when someone sits. The table folds manually when needed.

Materials

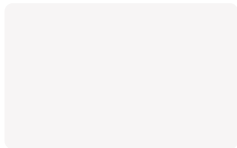


Calma Materials

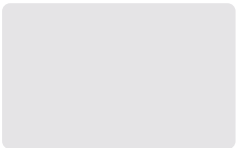


HDF Powder Coating Finishes

Color options for exterior and table top surfaces.



White
PW9010



Light Grey
PW1500



Beige
PW3001



Dark Grey
PW7030



Black
PW9017



Lemon Yellow
PW1012



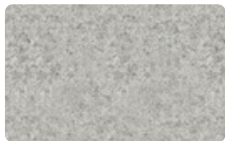
Pastel Blue
PW5024



Olive Green
PW6003

Felt Options

Color options of recycled PET felt for the ceiling and interior back walls.



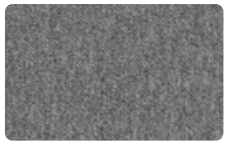
LIGHT GREY
FLT02



DARK GREY
FLT03

Carpet Options

Color options the ceiling and interior back walls.



CORAL
342



CORAL
350

HDF Powder Coated Exterior Walls and Built-in Furniture
Upholstered Side Walls and Sofas
Recycled PET Felt Ceiling and Back Wall

Fabric Specifications

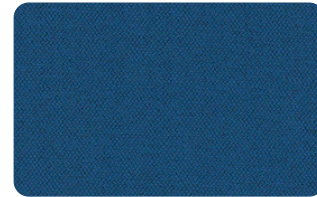
Upholstery - Era (Standard)



Lifetime
NU A3-03



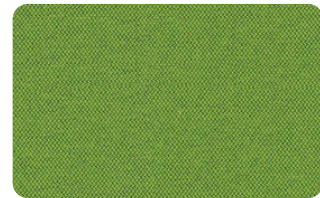
Chapter
NU A3-08



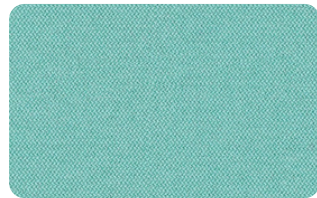
Stage
NU A3-15



Forecast
NU A3-11



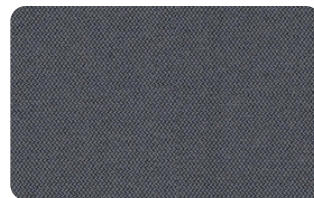
Timelapse
NU A3-16



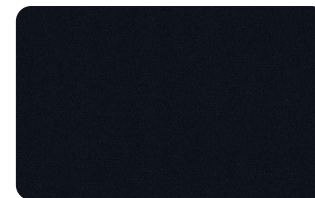
Aeon
NU A3-20



Sequence
NU A3-25



Present
NU A3-13



Forward
NU A3-14



100% Polyester

Weight: 320 g/m2 \pm 5%
Fastness to Rubbing: Wet: 4, Dry: 4 (ISO 105 - X12)
Light Fastness: 5 (ISO 105 - B02)

Flammability
BS 7176 Low Hazard
EN 1021 - 1&2 (cigarette & match)
EN 13501-1 Adhered Class B, s1, d0
EN 13501-1 Un-adhered Class C, s1, d0
BS 7176 Medium Hazard with EnviroFlam5
BS 5852 Ignition Source 5 with EnviroFlam5
The Furniture & Furnishing (Fire Safety) Regulations 1988
(UK domestic cig & match) with EnviroFlam5



Experience
NU A3-29



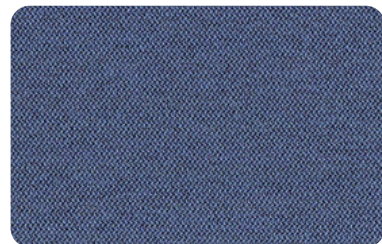
Endurance
NU A3-34



Notation
NU A3-36



Youth
NU A3-39



Range
NU A3-42



Late
NU A3-43



Quota
NU A3-41



Prompt
NU A4-45

Fabric Specifications

Upholstery - Rivet (standard)



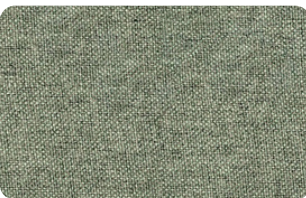
Wire
NU A4-03



Resin
NU A4-04



Alloy
NU A4-05



Ferrous
NU A4-15



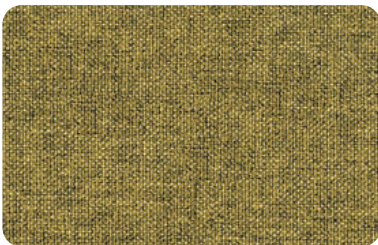
Solder
NU A4-18



Chromoly
NU A4-19



Molten
NU A4-09



Spark
NU A4-10



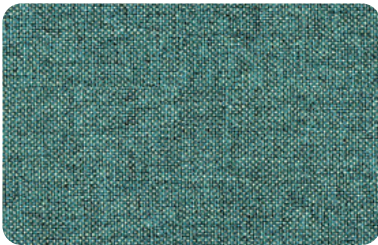
Abraid
NU A4-13



Copper
NU A4-14



Tensile
NU A4-20



Verdigris
NU A4-21



Cast
NU A4-25



Galvanise
NU A4-26



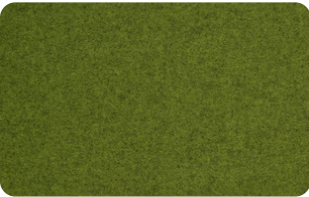
100% Post Consumer Recycled Polyester

Weight: 280 g/m2 ±5%
Fastness to Rubbing
Wet: 4, Dry: 4 (ISO 105 - X12)
Light Fastness: 5-6 (ISO 105 - B02)

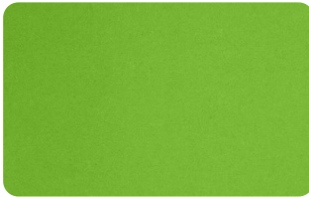
Flammability
EN 1021 - 1&2 (cigarette & match) BS 7176
Low Hazard UNI 9175 Classe 1 IM EN 13501-1 Adhered Class B, s2, d0 EN 13501-1 Un-adhered Class B, s1, d0 Optional: Please specify when ordering: BS 5852 Ignition Source 5 when treated with EnviroFlam5 BS 7176 Medium Hazard when treated with EnviroFlam5 The Furniture and Furnishing (Fire Safety) Regulations 1988 (UK domestic cigarette and match) with EnviroFlam5 DIN 4102 B1 with FR Treatment (Gorts) BS 5867-2: Type B Curtains & Drapes with FR Treatment (Gorts) EN 13773 Class 1 with FR Treatment (Gorts)

Fabric Specifications

Upholstery - Blazer (Upcharge)



Wire
NU D1-1K



Newport
NU D1-1L



Plymouth
NU D1-1R



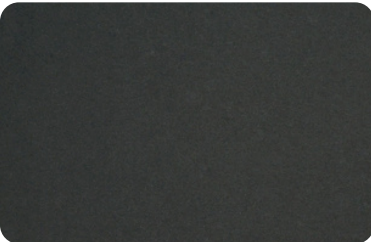
Newcastle
NU D1-1W



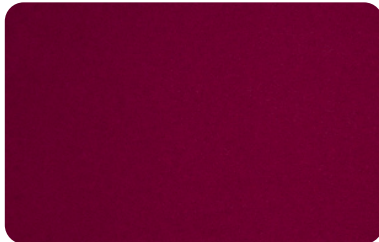
Aston
NU D1-02



Napier
NU D1-08



Winchester
NU D1-012



Magdalene
NU D1-021



Silverdale
NU D1-028



Bromsgrove
NU D1-035



Goldsmith
NU D1-039



Fairfield
NU D1-047



Handcross
NU D1-063



Copper
NU D1-082



100% Virgin Wool

Weight: 460 g/m2 ±5%
Fastness to Rubbing: Wet: 4, Dry: 4
(ISO 105 - X12)
Light Fastness: 4-6 (ISO 105 - B02)

Flammability
EN 1021 - 1&2 (cigarette & match)
BS 7176 Low Hazard
NF D 60-013
ÖNORM B 3825 & A 3800-1 (over CMHR
58kg/m3 Foam)
UNI 9175 Classe 1 IM
BS 476 Part 7 Class 1 (Adhered)
EN 13501-1 Adhered Class D, s1, d0
IMO FTP Code (Part 8)
The Furniture and Furnishing (Fire Safety)
Regulations 1988 (UK domestic cigarette
and match)
BS 5852 Ignition Source 5 when FR
treated
BS 7176 Medium Hazard when FR treated
BS 476 Part 6 Classs 0 when FR treated
(Adhered)
EN 13501-1 Adhered Class B, s1, d0 when
FR treated
EN 13501-1 Un-adhered Class D, s2, d0
when FR treated
BS 5867-2 Type B Curtains & Drapes when
FR treated
EN 13773 Class 1 (when FR treated)

Sustainable & VOC-Free HDF Powder Coating



Durable



Easy to
Clean



Odorless



Moisture
Resistant



Low Risk of
Fire Hazard



100% Healthy
Eco-Friendly



Anti-Allergic
Antibacterial



Non-Toxic



0% Paint
Waste

Calma Recommendations

Please follow the recommendations and guides when using, installing, or moving Calma for best results.

- Do not plug in appliances more than 220-230 VAC.
- Make sure that Calma is not plugged before you open the access cover on top.
- The ventilation and lights work at the same time. Make sure the lights are on when you are in the pod.
- Do not block the vent grill, keep 20 cm distances between Calma products and walls.
- Do not smoke inside.
- To have better access to air, we also recommend having at least 20 cm space distance between the ceiling and pod.
- Keep the door closed at all times.
- Keep fire sources away from Calma at all times.
- **Do not install high power-consuming devices such as heaters or vacuum cleaners inside Calma.**
- The maximum power outlet capacity is 750W for standard Calma.

maxfurniture.co.uk



nurus