

# hushwall

ENGAGE. INSPIRE. ADAPT.



hushoffice

mikomax smart office.

*In Partnership with*  
**Max Furniture**



DO YOU KNOW HOW MANY DIFFERENT OFFICES  
YOU CAN HAVE IN A SINGLE SPACE?



Businesses are adapting to changing and unpredictable working conditions by designing their offices according to the agile office philosophy, allowing for simple and quick rearrangement of workplaces. An office is a place to establish social relationships. It engages in collaborative project work. It inspires the search for the best solutions with presentations, workshops and training.

**A well-designed office allows division of its space to create workstations adapted to the tasks at hand.**



**hushoffice**



**hushwall**

## MULTI FUNCTIONALITY



### ENGAGE

for effective teamwork.



### INSPIRE

the presentation of ideas and concepts during training and workshops.



### ADAPT

to adapt the workplace to the tasks at hand.



# CREATING NEW WORKSPACES HAS NEVER BEEN SO EASY

**HushWall** is a mobile partition for flexible office zone creation while providing a vertical workspace area. The mobile wall comprises a body that provides the following configurations: a mobile partition with a sound-absorbing felt panel, a mobile partition with a whiteboard, or a mobile multimedia display wall on which a TV mount can be installed. The structure provides an easy way to connect power cords.

**HushWall** helps to create new office partitioning layouts and quickly adapts to changing working conditions – without the need for any installers or conversion of the office interior.

**HushWall** has a sufficient weight to ensure stability with easy mobility.



## EACH SIDE CAN BE CONFIGURED IN ONE OF THREE WAYS

### MOBILE PARTITION WITH TV MOUNT RECESS

Present multimedia content where and how you want.



### MOBILE PARTITION WITH WHITEBOARD

Provide a creative space for teamwork.



### MOBILE PARTITION WITH FELT PANEL

Create new work spaces with acoustic comfort.



## TECHNICAL SPECIFICATION



### BODY

- 1 The structure is formed by a honeycomb board with aluminium profile brackets.
- 2 The side walls and the top and bottom rim are made of a 38 mm thick honeycomb board.
- 3 The inner structure is formed by 40x40 mm steel profiles and 18 mm thick chipboard.
- 4 The main panel is made of 18 mm thick melamine-faced chipboard and can be fitted with a TV mount.
- 5 A 60 mm dia. cable entry is installed in the panel. Recommended TV/display size / weight: 55" / max. 20 kg.
- 6 60 mm cable entry installed in the middle and bottom rims.

### ROLLER DOOR

- 7 Made of ABS plastic with the Top Basic carrier system.

### MOBILE BASE

- 8 Formed by steel profiles and cast aluminium pieces, finished with powder coating.
- 9 Universal casters with foot brakes, suitable for hard floors and carpets.



## DIMENSIONS



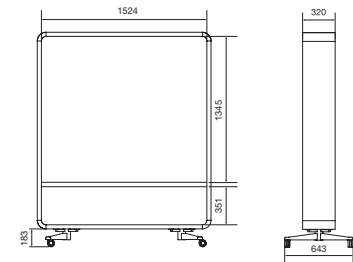
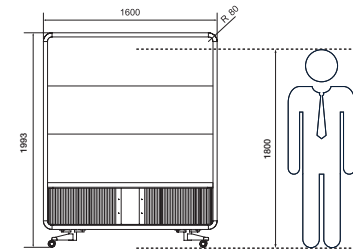
W: 1600 mm

D: 643 mm

H: 1993 mm

Weight net: 124 kg

Weight gross: 195 kg



# FINISHES



## Body

ABB  
WHITE

AGC  
COSMOS  
GREY

## Felt

GAG

GBC

GOD

GCA

GDC

GFI

## Base

JGC  
COSMOS  
GREY

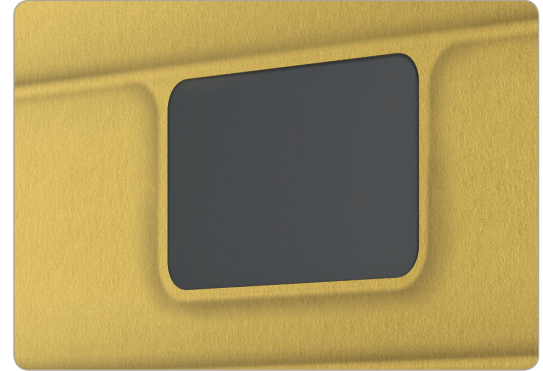
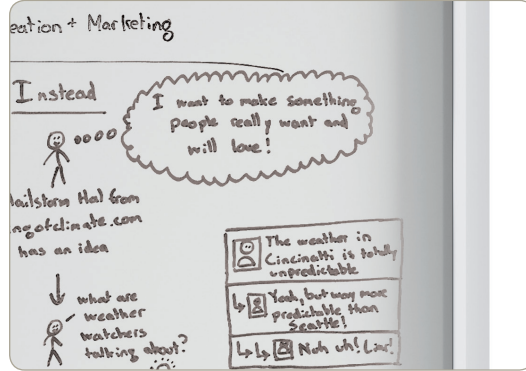
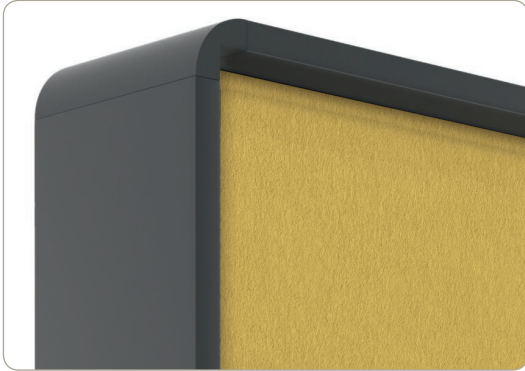
## Roller door

GCZ  
BLACK

## Whiteboard

JBL  
WHITE

# VISUALIZATION / DETAILS



# VISUALIZATION / DETAILS





ENGAGE. INSPIRE. ADAPT.

# hushwall

Find out more by visiting our website.  
[maxfurniture.co.uk](https://maxfurniture.co.uk)



[maxfurniture.co.uk](https://maxfurniture.co.uk)



Showroom: Unit 1,2 & 3 25  
Britton Street, Clerkenwell,  
London. EC1M 5NY

Tel: 020 7708 1788



**mikomax** smart office.

